

FIRST RECORD OF THE MORAY EEL, *GYMNOTHORAX CHLAMYDATUS* FROM TAIWAN¹

SIN-CHE LEE

Institute of Zoology, Academia Sinica
Taipei, Taiwan, Republic of China

AND

WANN-NIAN TZENG

Department of Zoology, National Taiwan University,
Taipei, Taiwan, Republic of China

(Received March 28, 1985)

Sin-Che Lee and Wann-Nian Tzeng (1985) First Record of the Moray eel, *Gymnothorax chlamydatus* from Taiwan. *Bull. Inst. Zool., Academia Sinica* 24(2): 295-296. This report deals with a newly recorded moray eel, *Gymnothorax chlamydatus* collected from Yen-liao Bay in northeastern Taiwan. This species resembles *G. reticularis*, however, they are easily distinguishable by different color pattern and body proportion as mentioned in the text.

During the recent investigation of commercial fishes of Yen-liao Bay in northeastern Taiwan, one moray eel, *Gymnothorax chlamydatus* Snyder, among the collections from Aoti fish market by the junior author (WNT) is hitherto unrecorded from Taiwan. Specimen was caught over the rocky bottom, which was photographed when fresh and preserved in 10% formalin thereafter. It is now deposited in the Museum of Institute of Zoology, Academia Sinica. In this report, a brief description, remark and distribution of the species are made.

Family Muraenidae

Gymnothorax chlamydatus Snyder, 1904

Fig. 1

Gymnothorax chlamydatus Snyder, 1908: 94
(type locality, Okinawa); Snyder, 1912:

493; Matsubara, 1955: 353; Masuda *et al.*, 1984: 24.

Material: 1 specimen, 506 mm TL, June 30, 1981, Yenliao, 53 m deep, longline.

Diagnosis: Head 9.49, depth 22.49 in total length. Body pale reddishbrown with 13 complete black broad rings with white borders. Interspace of the rings and the entire head with black dots.

Remarks: The present species resembles *G. reticularis* (Fig. 2), but distinguishable by having complete but fewer dark rings (13) with whitish borders compared to the obscure but more numerous cross bands (14-22) of no whitish borders in the latter species. In addition, *G. reticularis* has longer head (7.24 vs 9.24 in TL) and deeper body (body depth 17.12 vs 22.49 in TL) than those of *G. chlamydatus*.

Distribution: The present species ranges from Okinawa Islands to Taiwan.

1. Paper No. 266 of the Journal Series of the Institute of Zoology, Academia Sinica.

REFERENCES

- MASUDA, H., K. AMAOKA, C. ARAGA, T. UYENO and T. YOSHINO (1984) *The fishes of the Japanese Archipelago*. Tokai Univ. Press, Tokyo. 437 pp.
- MATSUBARA, K. (1955) *Fish morphology and hierarchy*. Part 1. Ishizaki-shoten, Tokyo. 789 pp.
- SNYDER, J. O. (1908) Descriptions of eighteen new species and two new genera of fishes from Japan and the Riu-Kiu Islands. *Proc. U.S. Natl. Mus.* 35(1635): 93-111.
- SNYDER, J. O. (1912) The fishes of Okinawa, one of the Riu-Kiu Islands. *Proc. U.S. Natl. Mus.* 42(1913): 487-519.

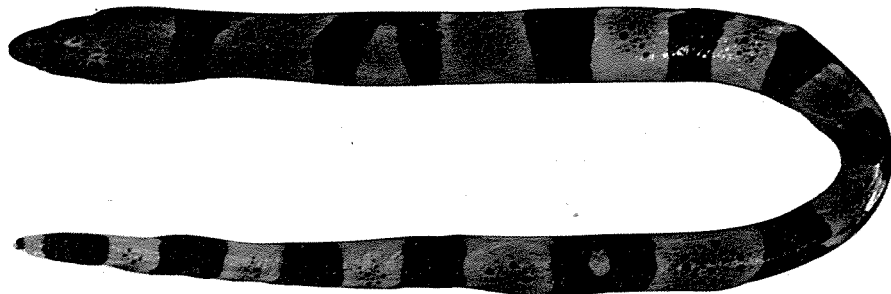


Fig. 1. *Gymnothorax chlamydatus*, 506 mm TL.

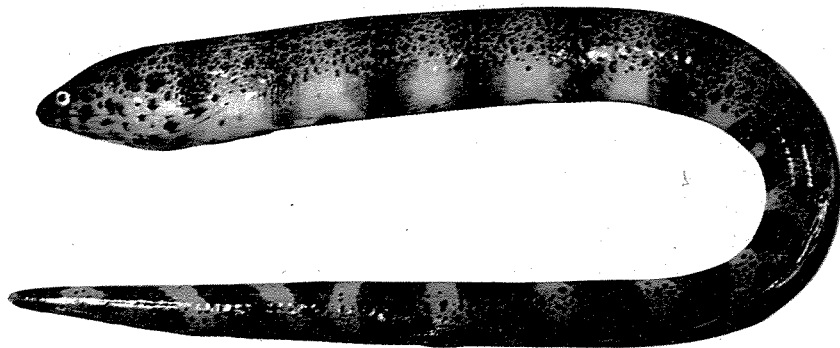


Fig. 2. *Gymnothorax reticularis*, 380 mm TL.

臺灣新記錄之黑環裸胸鯧魚

李 信 徹 曾 萬 年

本文記載採自臺灣東北岸鹽寮附近岩礁海域之黑環裸胸鯧 (*Gymnothorax chlamydatus*)。該種鯧科魚類與疏條紋裸胸鯧 (*G. reticularis*) 頗為相似，然因其體側之橫帶呈顯著之暗褐色且各具白邊，各橫帶之背腹相連成完整之環帶，又體高較低，頭部亦較後者為短，故易區分之。